

GENERAL NOTES:

1. FIRST FLOOR CONSTRUCTION IS WHITE PORCELAIN TILE.
 2. SECOND FLOOR CONSTRUCTION IS HARDWOOD OAK FLOORS UNLESS OTHERWISE NOTED.
 3. EXTERIOR WALLS ARE STOREFRONT CURTAIN WALLS.
 4. INTERIOR WALLS ARE FINISHED GYPSUM BOARD PAINTED WHITE UNLESS OTHERWISE NOTED.
 5. CEILINGS ARE FINISHED GYPSUM BOARD PAINTED WHITE UNLESS OTHERWISE NOTED.
 6. STAIRS ARE CONSTRUCTED OF REINFORCED TEMPERED GLASS
 7. ALL FURNITURE IS SUGGESTIVE AND SUBJECT TO CHANGE.
 8. BUILT IN MEETING DESKS ARE FINISHED OAK PAINTED WHITE.
 9. PATIO FLOORING IS STAMPED CONCRETE.
 10. ROOF IS A LIVING GREEN ROOF SYSTEM WITH SEASONAL ACCESS FOR CUSTOMERS.
- CODES:**
- BUILDING CLASSIFICATIONS: FIRST FLOOR- MERCANTILE
SECOND FLOOR- ASSEMBLY A-2
- SQUARE FOOTAGE OF FIRST FLOOR- 3,328 SQ. FT.
SECOND FLOOR- 1,536 SQ. FT.
- BUILDING HEIGHT- 22'-0"
- OCCUPANCY CALCULATIONS- FIRST FLOOR: 3328 / 300 = 11.1=12
SECOND FLOOR: 1536 / 15= 102.4=103
TOTAL OCCUPANCY OF SPACE: 115
- NUMBER OF EXITS REQUIRED- 2

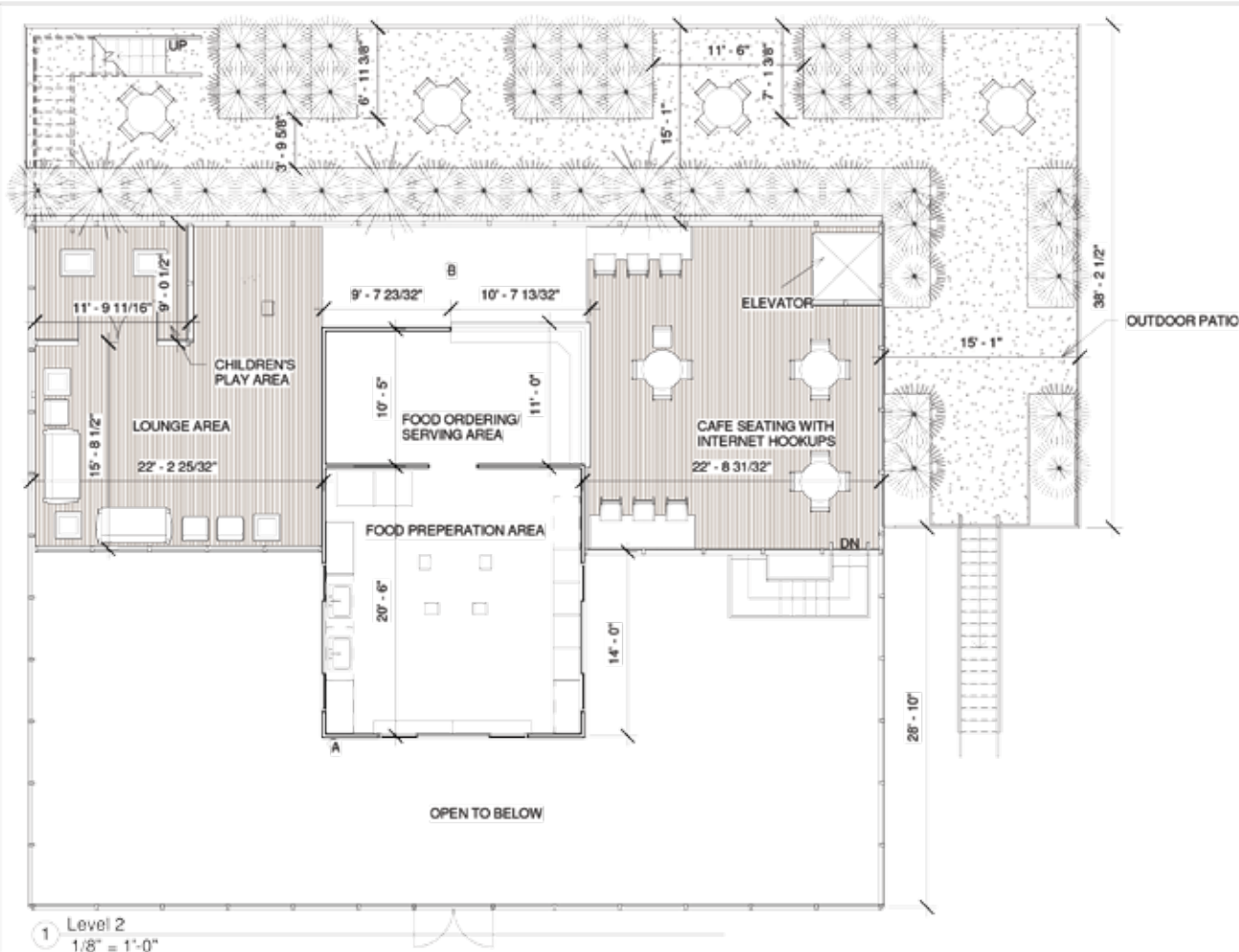


LORI YODER
TIRE STORE



FLOOR/FURNITURE PLAN

Project number	3	A1
Date	APRIL 29, 2015	
Drawn by	LORI YODER	
Checked by	PROF LAHRMER	
		Scale: 1/8" = 1'-0"



GENERAL NOTES:

1. FIRST FLOOR CONSTRUCTION IS WHITE PORCELAIN TILE.
2. SECOND FLOOR CONSTRUCTION IS HARDWOOD OAK FLOORS UNLESS OTHERWISE NOTED.
3. EXTERIOR WALLS ARE STOREFRONT CURTAIN WALLS.
4. INTERIOR WALLS ARE FINISHED GYPSUM BOARD PAINTED WHITE UNLESS OTHERWISE NOTED.
5. CEILINGS ARE FINISHED GYPSUM BOARD PAINTED WHITE UNLESS OTHERWISE NOTED.
6. STAIRS ARE CONSTRUCTED OF REINFORCED TEMPERED GLASS
7. ALL FURNITURE IS SUGGESTIVE AND SUBJECT TO CHANGE.
8. BUILT IN MEETING DESKS ARE FINISHED OAK PAINTED WHITE.
9. PATIO FLOORING IS STAMPED CONCRETE.
10. ROOF IS A LIVING GREEN ROOF SYSTEM WITH SEASONAL ACCESS FOR CUSTOMERS.

CODED NOTES:

- A. WALLS OF CAFE ARE FINISHED GYPSUM BOARD PAINTED DARK GREY.
- B. FLOOR CONNECTED TO FRONT OF CAFE TO BE BLACK PROCELAIN TILE.

CODES:

BUILDING CLASSIFICATIONS: FIRST FLOOR- MERCANTILE
SECOND FLOOR- ASSEMBLY A-2

SQUARE FOOTAGE OF FIRST FLOOR- 3,328 SQ. FT.
SECOND FLOOR- 1,536 SQ. FT.

BUILDING HEIGHT- 22'-0"

OCCUPANCY CALCULATIONS- FIRST FLOOR: 3328 / 300 = 11.1=12
SECOND FLOOR: 1536 / 15= 102.4=103
TOTAL OCCUPANCY OF SPACE: 115

NUMBER OF EXITS REQUIRED- 2

1 Level 2
1/8" = 1'-0"



**LORI YODER
TIRE STORE**



FLOOR/FURNITURE PLAN

Project number	3	A2
Date	APRIL 29, 2015	
Drawn by	Author	Scale 1/8" = 1'-0"
Checked by	Checker	

5/4/2015 12:04:43 PM



